



Figure 17      **Cheyenne** 1890. PAM

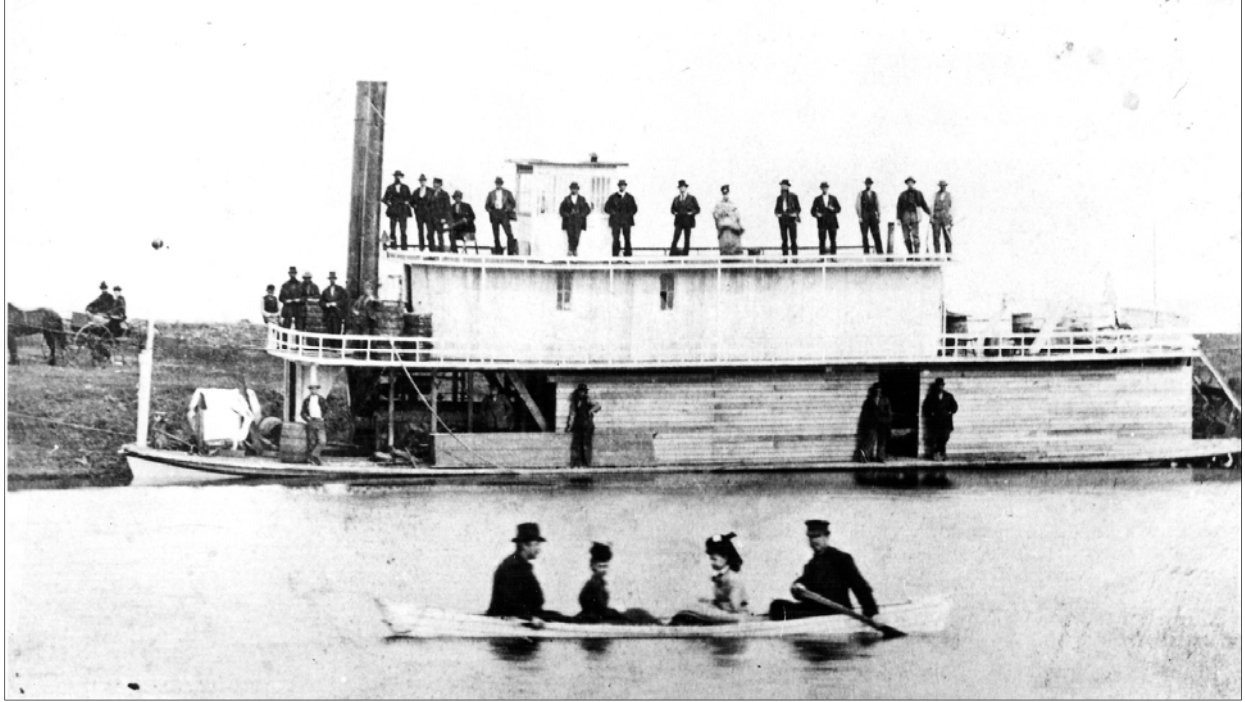


Figure 18      **Alpha**, c.1878. PAM



Figure 19 **North West** at Brandon, 1882. PAM



Figure 20 Steamboat Landing from [Picturesque Canada](#)

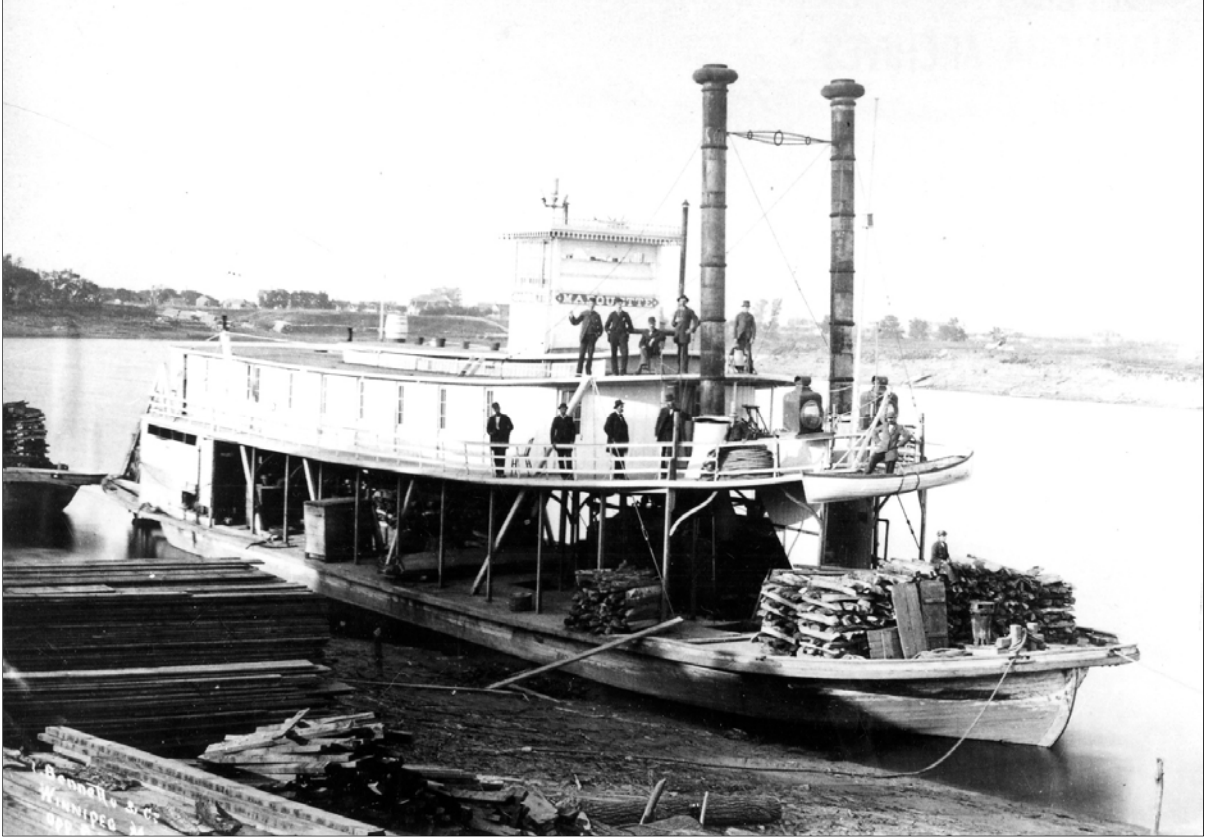


Figure 21      **Marquette**, c.1883. PAM



Figure 22 Steel Steamboat under construction Saskatchewan Archives Board  
Photograph R-B3371



Figure 23      **Marquis**, c.1884. PAM



Figure 24 Marquis, Prince Albert, c.1900. PAM





Figure 25

**Manitoba**, NWT 1885. Western Canada Pictorial Index

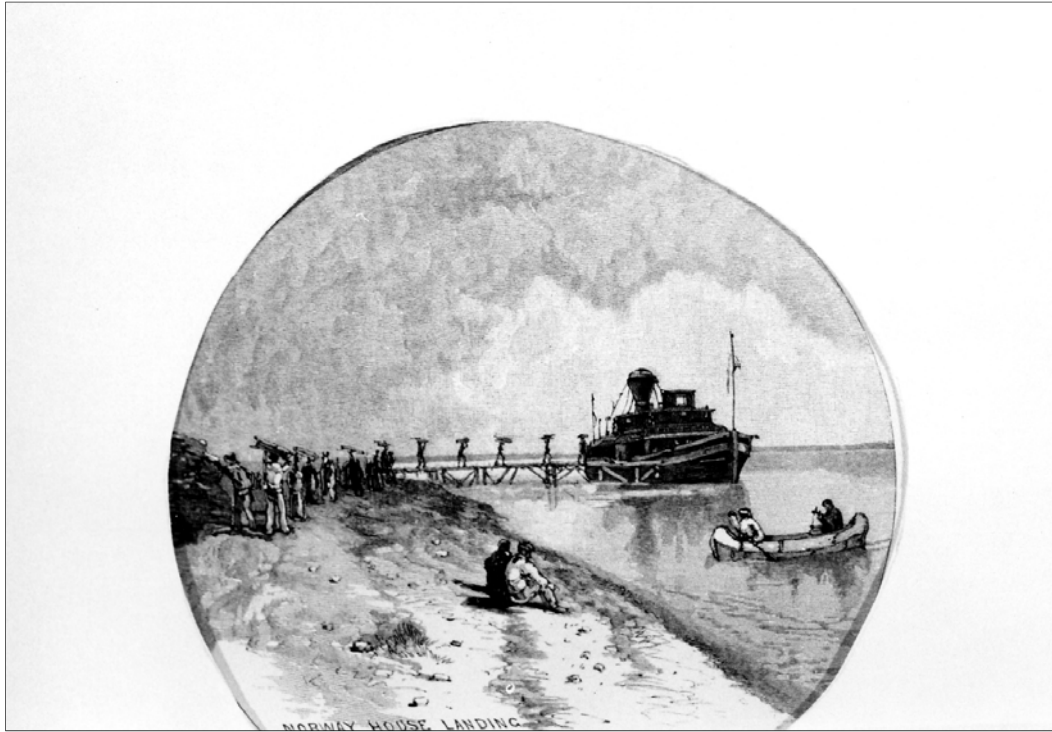


Figure 26 Norway House Landing, the **Colville**, from Picturesque Canada



Figure 27 **Colville** moored to dock made from (former **Chief Commissioner**) at Lower Fort Garry.  
National Archives of Canada, Geological Survey Collection

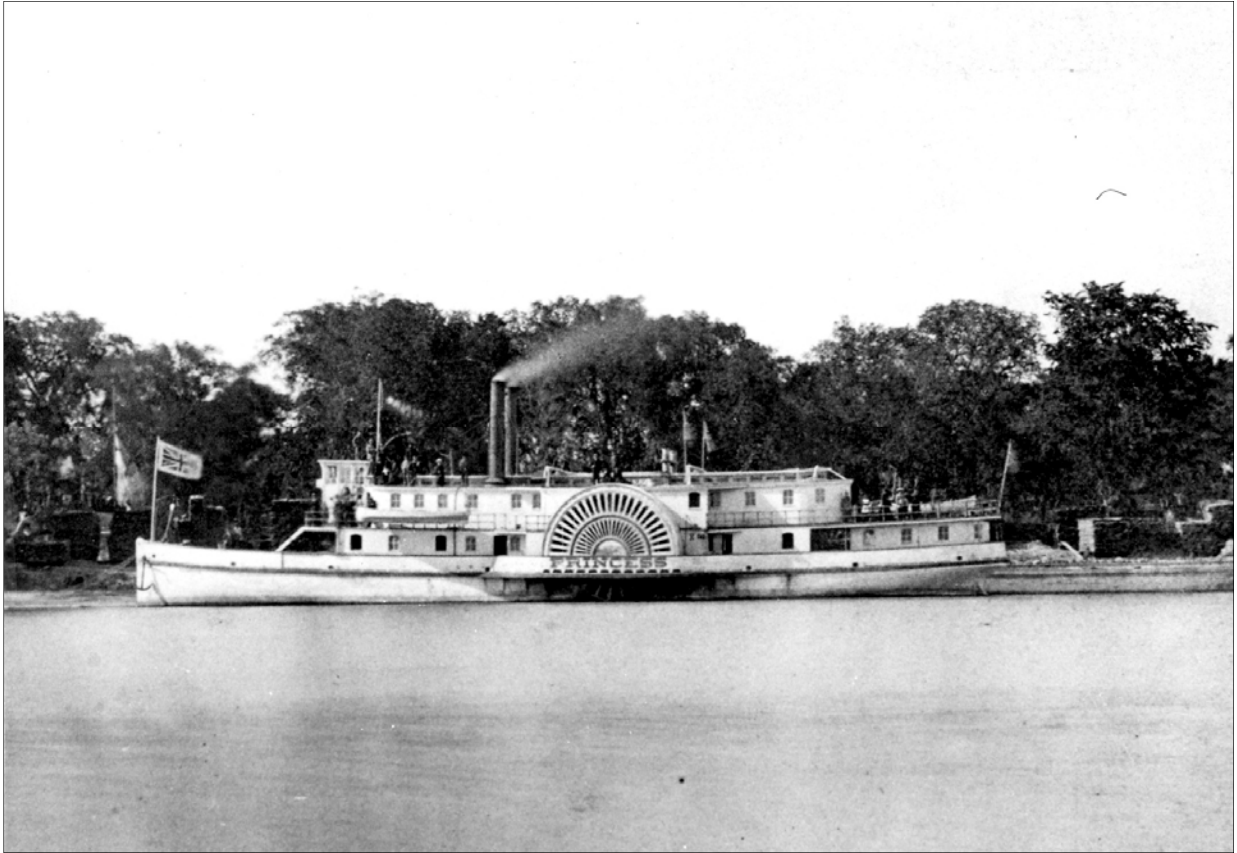


Figure 28      **Princess. PAM**

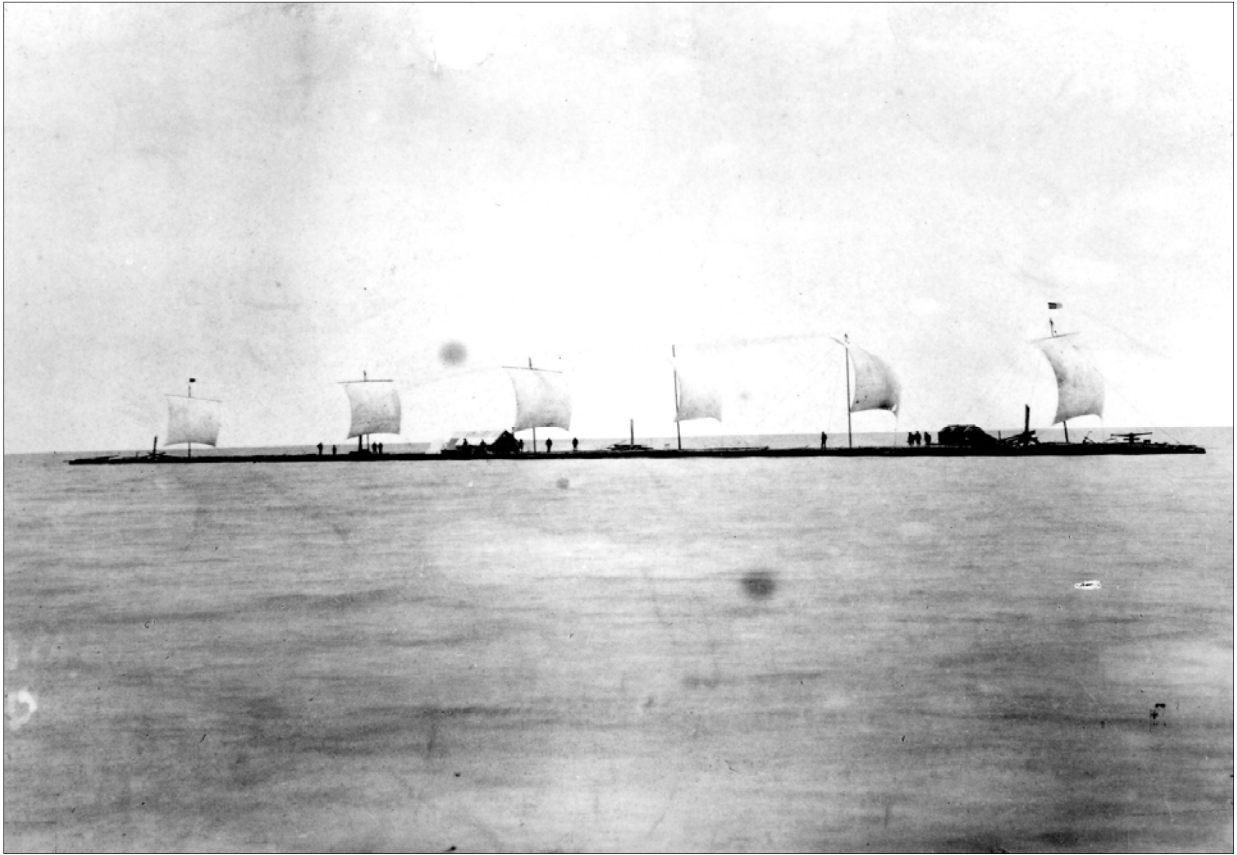


Figure 29 Lumber raft with sails, Lake Manitoba, 1891. PAM

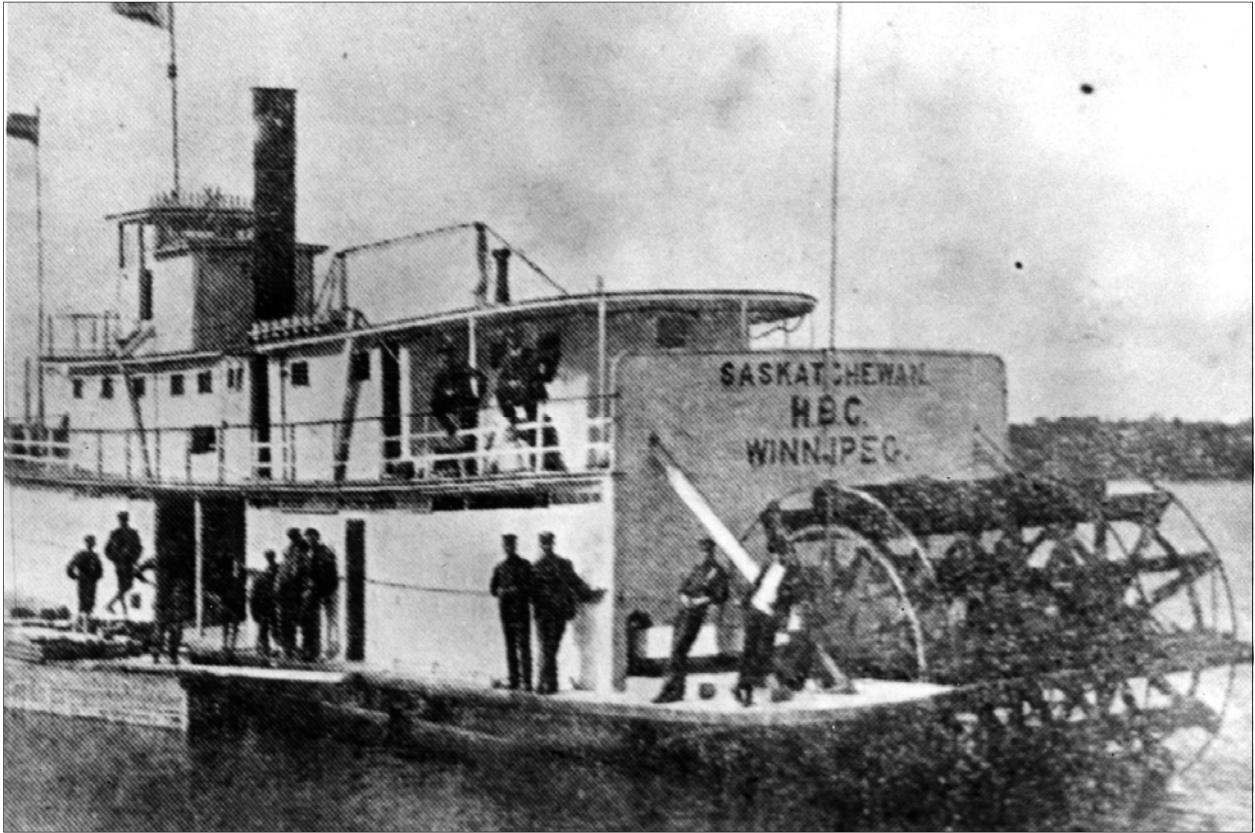


Figure 30 Saskatchewan, 1882. PAM

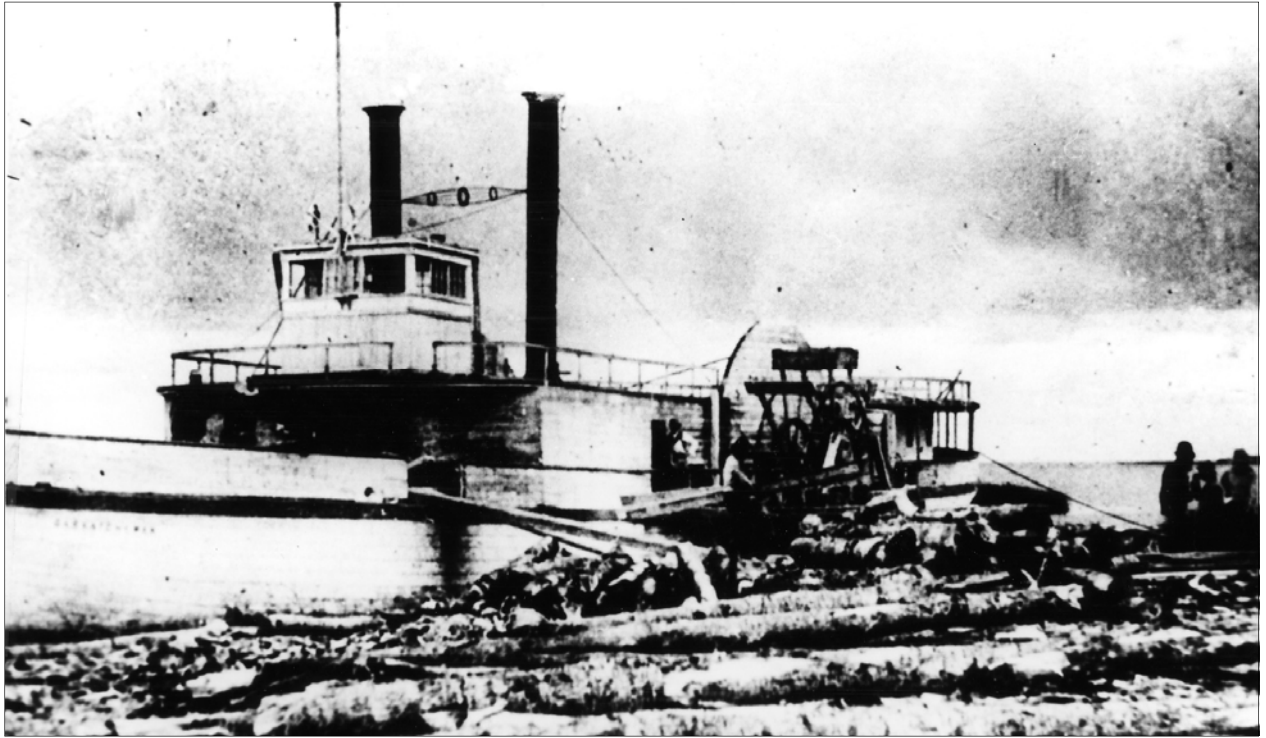


Figure 31 **Saskatchewan**, c.1890. PAM